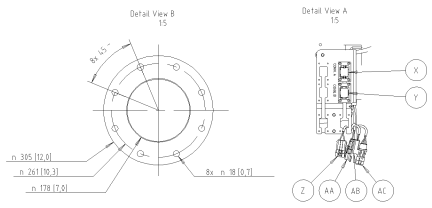
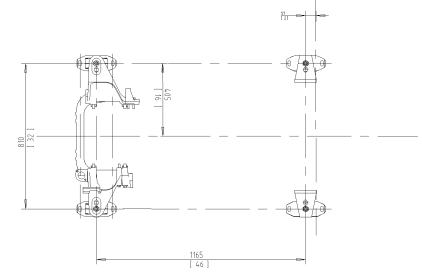
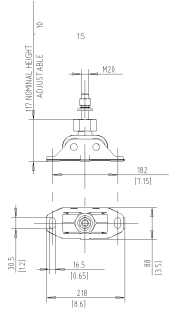


- A FUEL CONNECTION INLET 1/4-18 NPTF
- B FUEL CONNECTION OUTLET 1/4-18 NPTF
- C FUEL PRIMER PUMP
- D WIN FUEL FILTER, SHIFTABLE
- E OIL FILLER
- F OIL DIPSTICK
- G OIL FILTERSx2, (OPTIONAL WITH SHIFT VALVE)
- H OIL FILTER BYPASS
- I HT WATER FILLER
- J HT WATER DRAIN POINTx2 1/8-27 NPTF
- K HT WATER DRAIN POINT TEMA 18418M13 C
- L LT WATER INLET PUMP n 63 O.D PIPE
- M LT WATER OUTLET n 54 O.D PIPE
- N LT WATER DRAIN POINTx1 1/8-27 NPTF
- O AIR FILTER ENGINE
- P PRESSURE DROP INDICATOR, AIR FILTER
- Q TURNABLE EXHAUST BEND 120
- R FLEXIBLE COMPENSATOR EXHAUST SYSTEM n 7" (OPTIONAL)
- S LIFTING EYESx3 n 30MM
- T ENGINE SUSPENSION
- U CONNECTION BATTERY POS. AND NEG. M12 SCREW
- V EMERGENCY STOP
- W POWER CONTROL MODULE
- X CONNECTOR A
- Y CONNECTOR B
- Z WIF CONNECTOR
- AA CONNECTOR EXTERNAL STOP
- AB CAN 2
- AC CONNECTOR EASY LINK
- AD MANUAL OIL DRAIN PUMP, 20mm I.D HOSE (OPTIONAL)
- AE AIR STARTER MOTOR (OPTIONAL)
- AF AIR STARTER CONNECTION, FERRULE FITTING n 28MM PIPE
- AG ENGINE HEATER 220V (OPTIONAL)
- AH ENGINE COOLANT SHUTDOWN SWITCH (OPTIONAL)
- AI ENGINE OILPRESSURE SHUTDOWN SWITCH (OPTIONAL)
- AGG CENTRE OF GRAVITY

- X, Y, Z, DIM FROM CRANKSHAFT CENTER AND REAR END OF FLYWHEEL HOUSING OF ENGINE
- A -X200 -Y370 +Z185
 - B -X200 -Y380 +Z210
 - AA, AB, AC CONNECTION FOR FUEL HOSE L=550mm HOSE END TO CUSTOMER INTERNAL M18x15 (DIN3863)
 - L -X690 -Y515 +Z360 (TURNABLE)
 - M -X125 -Y490 +Z25 (TURNABLE)
 - R -X925 +Y380 +Z1070
 - X -X175 -Y240 +Z575
 - Y -X175 -Y240 +Z535
 - Z, AA, AB, AC -X45 -Y370 +Z350
 - AH -X960 +Y315 +Z490
 - AI -X970 -Y420 +Z370
 - AJ -X745 +Y385 +Z380 (TURNABLE)
 - AGG -X740 -Y10 +Z215



DRY WEIGHT 1510 KILOGRAM
 OIL CAPACITY AND COOLING WATER CAPACITY SEE DATA SHEET
 SCALE 1:10

The drawing shall remain the property of the Supplier. It shall not be used for any other purpose without the written consent of the Supplier. The Supplier shall not be held responsible for any errors or omissions in this drawing. The drawing shall be used for the production of parts only. It shall not be used for any other purpose.	SYMBOLS, DIMENSIONS AND GENERAL DIMENSIONS SHALL BE IN mm	
	ENGINE DIMENSION DIA. MM CC BOBTAL AIR/EL STARTER	
DIMENSION DRAWING Date: 21693395		