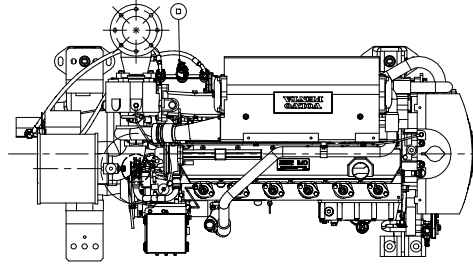
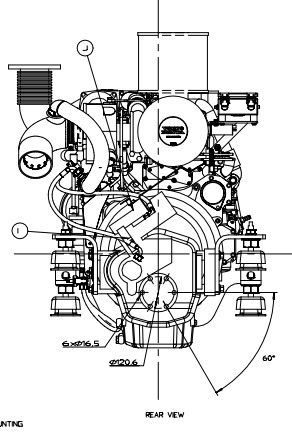
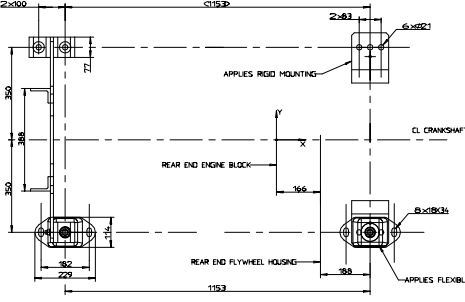
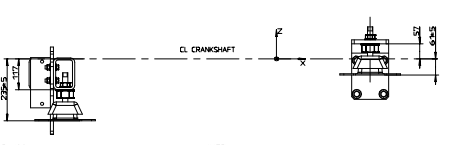


APPLIES WET EXHAUST ELBOW ONLY



SCALE 1:5

- A SEA WATER INLET
- B SEA WATER OUTLET (APPLIES DRY EXHAUST ELBOW)
- C ANODE
- D PRESSURE SENDER REVERSE GEAR OPTION
- E WET EXHAUST ELBOW FOR 5" HOSE OPTION
- F INLET FLOW FROM REVERSE GEAR COOLER
- G HOSE BETWEEN OILCOOLER AND WET EXHAUST ELBOW
- H SEA WATER DRAIN
- I CONNECTION FOR 33-CABLE FOR REVERSE GEAR
- J CONNECTION SLP VALVE FOR 33-CABLE OPTION
- K PROP. SHAFT FLANGE, MAX 470 MM OPTION
- L RUBBER MOUNTING OPTION

CONSEQUENCE CLASS W APPLIES TO PROPERTIES NOT MARKED

DRY MASS APPROX. 830 KG

● CENTER OF GRAVITY

FOR OTHER DIMENSIONS, SEE FOLLOWING DRAWINGS: 3590792, D7A / D7C / D7C TA