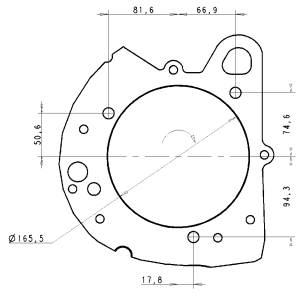
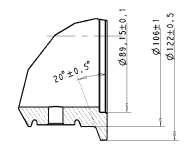


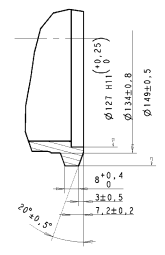
VIEW RR AIR COMPRESSOR PTO 1:2



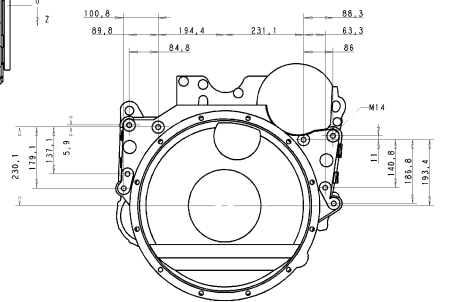
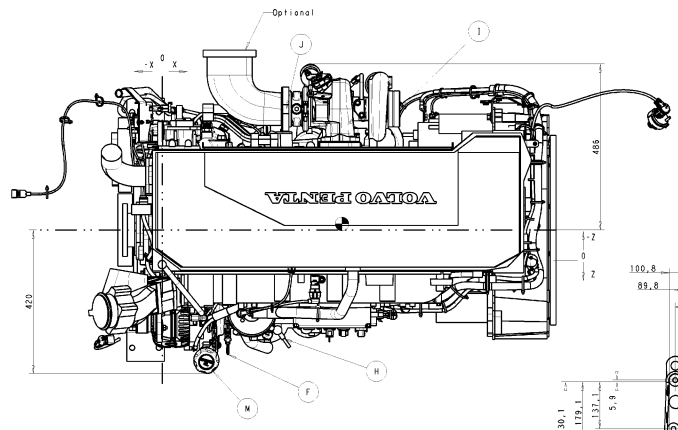
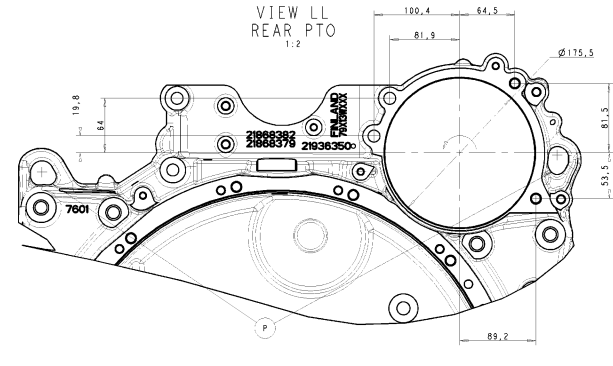
V-CLAMP (POS J) INTERMEDIATE SECTION 1:1



V-CLAMP EXHAUST FLANGE 1:1



VIEW LL REAR PTO 1:2



| POS | DESCRIPTION | X | Y | Z | NOTE |
|-----|--|------|-------|------|--------------------------------|
| A | SENSOR AMBIENT TEMP | 1465 | 799 | -355 | |
| B | SENSOR EXP TANK | -417 | 858 | -106 | |
| C | CHARGE AIR FROM CAC | -136 | 693 | 358 | Ø88 |
| D | | | | | |
| E | COOLANT DRAIN COOK | 361 | 170 | 255 | M22x1.5 |
| F | OIL DIP STICK | 192 | -65 | 319 | |
| G | FUEL INLET | | | | Ø9.5 |
| H | FUEL INLET OPTIONAL | 335 | 273 | 264 | 3/8" NPSF |
| I | FUEL RETURN | | | | Ø8.35 |
| J | FUEL RETURN OPTIONAL | 355 | 8 | 318 | 1/4" NPSF |
| K | AIR INTAKE | 695 | 390 | -354 | Ø106 |
| L | EXHAUST OUTLET | 363 | 390 | -354 | V-CLAMP Ø122 |
| M | COOLANT INLET | 152 | -135 | -256 | Ø60 |
| N | COOLANT OUTLET | -149 | 550 | -227 | Ø60 |
| O | OIL FILLER CAP | -129 | 84 | 386 | |
| P | OIL PRESSURE SENSOR | | | | EMS |
| Q | COOLANT TEMP SENSOR | 74 | 380 | -155 | EMS |
| R | LIFTING EYE | 984 | 297.5 | -325 | |
| S | FROM EXPANSION TANK | 104 | 474 | -316 | Ø22 |
| T | CHARGE AIR TO CAC | 550 | 51 | -474 | Ø90 |
| U | AIR FILTER INDICATOR | | | | |
| V | OIL DRAIN PLUG | 378 | -470 | -73 | M24x1.5 |
| W | OIL TEMP SENSOR | 716 | -166 | 180 | EMS |
| X | CRANK CASE VENTILATION | 208 | -219 | 269 | Ø32.5 |
| Y | OIL TO AIR COMPRESSION | 892 | 297 | 138 | M12x1.5 |
| Z | CONTROL UNIT | 430 | 195 | 168 | |
| AA | LIFTING EYE | -60 | 577 | -60 | |
| BB | AIR VENT Ø 8.5 TO BE CONNECTED TO EXP. TANK | 76 | 521 | -255 | |
| CC | COOLANT LEVEL SENSOR | | | | FOR VOLVO PENTA EXPANSION TANK |
| DD | AUX REMOTE STOP DIAGNOSIS AND ENGINE INTERFACE | 519 | 383 | 290 | |
| EE | AUX. STOP | 430 | 366 | 289 | |
| FF | COOLANT OUTLET (eng heat 2000W) | 747 | 260 | -143 | F16-MH13,5 |
| GG | COOLANT OUTLET (eng heat 2500W) | 131 | 44 | -354 | F16-MH13,5 |
| HH | COOLANT OUTLET (UREA) | -266 | 239 | -178 | F10-MH9,5 |
| II | COOLANT INLET (UREA retur) | 208 | -24 | -347 | F10-MH9,5 |
| JJ | COOLANT OUTLET (compressor retur) | -35 | 512 | 111 | F16-MH13,5 |
| KK | COOLANT INLET (compressor retur) | 42 | 247 | -395 | F16-MH13,5 |
| LL | COOLANT INLET (cab heat) | 50 | 459 | -368 | F16-MH13,5 |
| MM | CENTRE OF GRAVITY | 526 | 526 | -18 | |

SCALE 1:5

SMALLER DIMENSIONS AND GENERAL DIMENSIONS ARE NOT TO SCALE

INSTALLATION DRAWING D11 1ND STAGE 2