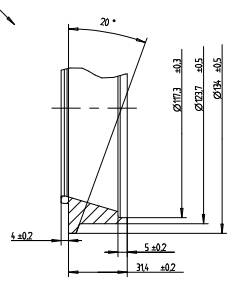
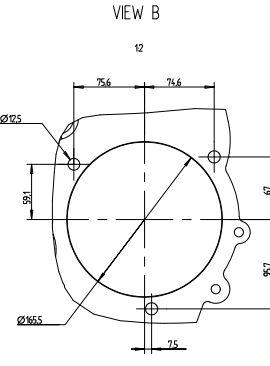


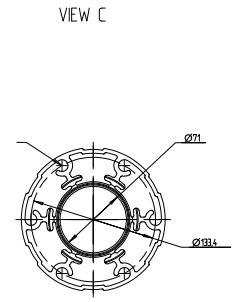
V-CLAMP TURBO CHARGER



EXHAUST FLANGE



AIR COMPRESSOR PTO



POS	DESCRIPTION	X	Y	Z	PRE	NOTE
1	WATER FROM ENGINE HEATER	-1010	128	1495		PRE CONNECTION TO FIT Ø22
2	WATER TO ENGINE HEATER	-154	-201	235		M18x15
3	WATER TO COMPRESSOR	-938	-149	292		PPE CONNECTION TO FIT Ø22
4	WATER FROM COMPRESSOR	-110	-202	258		M22x15
5	WATER DRAIN COOK	-470	-224	85		M22x15
6	OIL DIP STICK	-307	357	-33		
7	FUEL INLET					Ø95.5
7	FUEL INLET OPTIONAL	-102	227	167		3/8" NPSF
8	FUEL RETURN	-522	-341	55		Ø6.35
8	FUEL RETURN OPTIONAL					1/4" NPSF
9	AIR INTAKE	-830	-368	380		Ø27
10	EXHAUST OUTLET	-518	-368	380		V-CLAMP Ø74
11	WATER INLET	-191	-262	10		Ø60
12	WATER OUTLET	74	-206	563		Ø60
13	OIL FILLER CAP	-198	312	49		
14	OIL PRESSURE SENDER	-735	107	198		Ø16
15	WATER TEMP SENDER	-451	-205	1423		Ø16
16	OPTIONAL SPEED SENDER	-1162	250	117		M18x15 GEAR RATIO 11 53 TEETH
17	FROM EXPANSION TANK	116	-389	511		Ø28
18	OIL DRAIN PLUG	-180	0	-437		M24x15
19	OIL TEMP SENDER	-360	188	-178		Ø16
20	CRANK CASE VENTILATION	-756	240	121		Ø28
21	OIL TO AIR COMPRESSOR	-781	126	162		M24x15
22	CONTROL UNIT					
23	FAN HUB	379	0	337		
24	AR VENT HOSE Ø 9.5 TO BE CONNECTED TO EXP. TANK	-62	-242	565		Ø10
25	CHARGE AIR FROM CAC	112	306	178		Ø90
26	CHARGE AIR TO CAC	-624	-482	143		Ø90
27	AUX REMOTE STOP, DIAGNOSIS AND ENGINE INTERFAC	-199	294	309		
28	AUX STOP	-548	297	404		
29	AR FILTER INDICATOR					FOR VOLVO PENTA AIRFILTER
30	COOLANT LEVEL SENSOR					FOR VOLVO PENTA EXPANSION TANK
31	FUEL MAIN FILTER					
32	FUEL PRE FILTER/WATER SEPARATOR					
33	OIL BY PASS FILTER					
34	OIL MAIN FILTER					
35	COOLANT FILTER					
TP	CENTRE OF GRAVITY	-634	11	210		

SCALE 1:15

VOLVO PENTA
 ENGINE DIMENSION TABLE
 21371785
 03
 1111