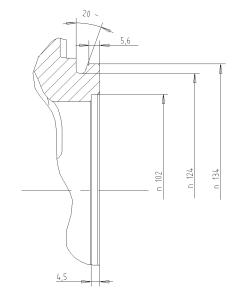
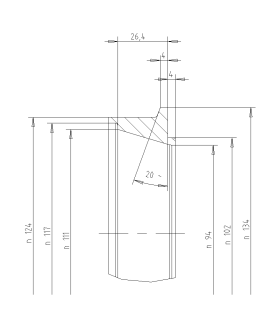


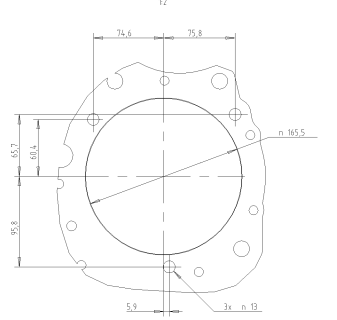
AIR TURBO COMPRESSOR PTO
11



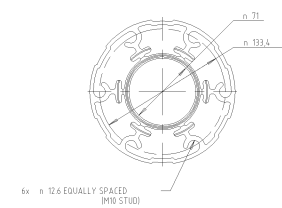
EXHAUST FLANGE
11



AIR COMPRESSOR PTO
12



FAN HUB
12



PDS	DESCRIPTION	X	Y	Z	NOTE
A	WATER FROM ENGINE HEATER	1096	390	-168	PPE CONNECTION TO FIT n 22
B	WATER TO ENGINE HEATER	226	210	-168	M22x1.5
C	CHARGE AIR FROM CAC	-177	805	330	n 100
D	HUMIDITY SENSOR	1665	971	-325	
E	COOLANT DRAIN COCK	226	210	-203	M22x1.5
F	OIL DIP STICK	295	134	374	
G	FUEL INLET	275	367	221	n 9.5
H	FUEL INLET OPTIONAL	480	64	365	3/8" NPSF
I	FUEL RETURN OPTIONAL	480	64	365	1/2" NPSF
J	AIR INTAKE	881	372	-363	n 106
K	EXHAUST OUTLET	358	380	-365	V-CLAMP n 122
L	WATER INLET	-83	-297	-207	n 60
M	WATER OUTLET	-96	518	-163	n 60
N	OIL FILLER CAP	209	146	344	
O	OIL PRESSURE SENSOR	804	203	120	EHS
P	WATER TEMP SENSOR	103	523	-211	EHS
Q	OPTIONAL SPEED SENSOR	1290	104	237	M18x1.5 GEAR RATIO 11 153 TEETH
R	FROM EXPANSION TANK	145	176	-266	n 28
S	CHARGE AIR TO CAC	638	-23	-442	n 90
T	AIR FILTER INDICATOR				
U	OIL DRAIN PLUG	53	-512	-54	M22x1.5
V	OIL TEMP SENSOR	388	-171	889	EHS
W	CRANK CASE VENTILATION	944	-190	290	n 38
X	OIL TO AIR COMPRESSOR	612	133	270	M12x1.5
Y	FAN HUB	-290	282	6	
Z	AIR VENT HOSE n 95 TO BE CONNECTED TO EXP. TANK	83	540	-245	M12x1.5
AA	COOLANT LEVEL SENSOR				FOR VOLVO PENTA EXPANSION TANK
BB	AUX REMOTE STOP, DIAGNOSIS AND ENGINE INTERFACE	499	310	240	
CC	AUX. STOP	773	335	198	
DD	UREA HEATER INLET OUTLET	222 -97 379 250 -188	-317 -317	166 188	INLET M16, OUTLET M18
FF	WATER TO COMPRESSOR	1088	340	-168	n 30
GG	WATER FROM COMPRESSOR	110	220	-202	M22 x 1.5
TP	CENTRE OF GRAVITY	559	220	-12	

SCALE: 1:5

ENGINE DIMENSIONS
FOR VOLVO PENTA
DIMENSION DRAWING

VOLVO PENTA

22361613

01