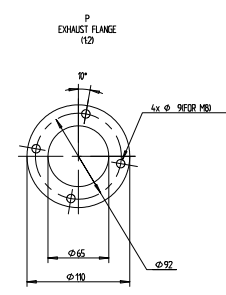
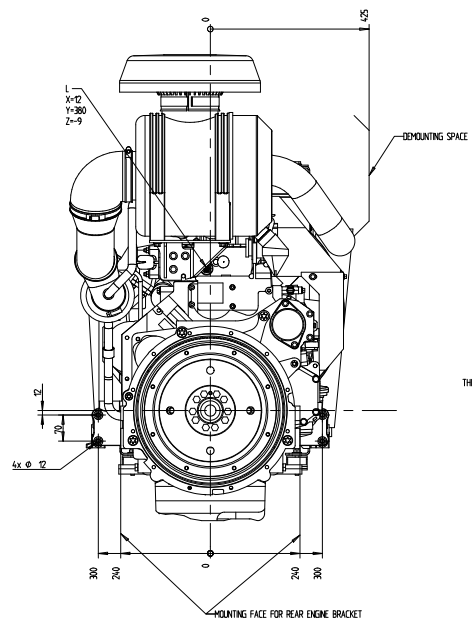
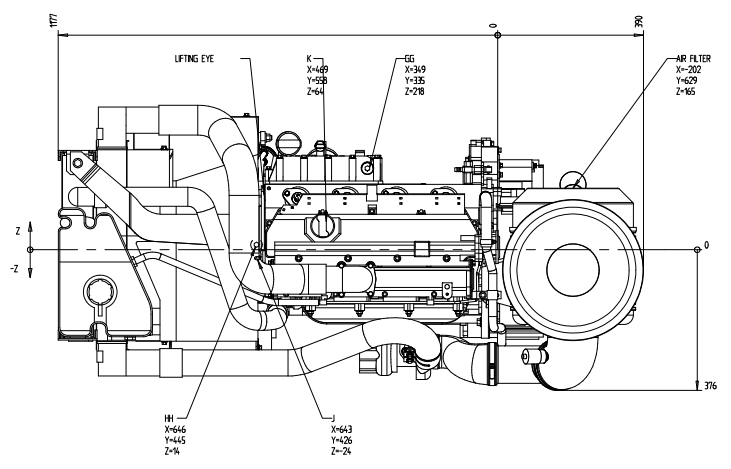
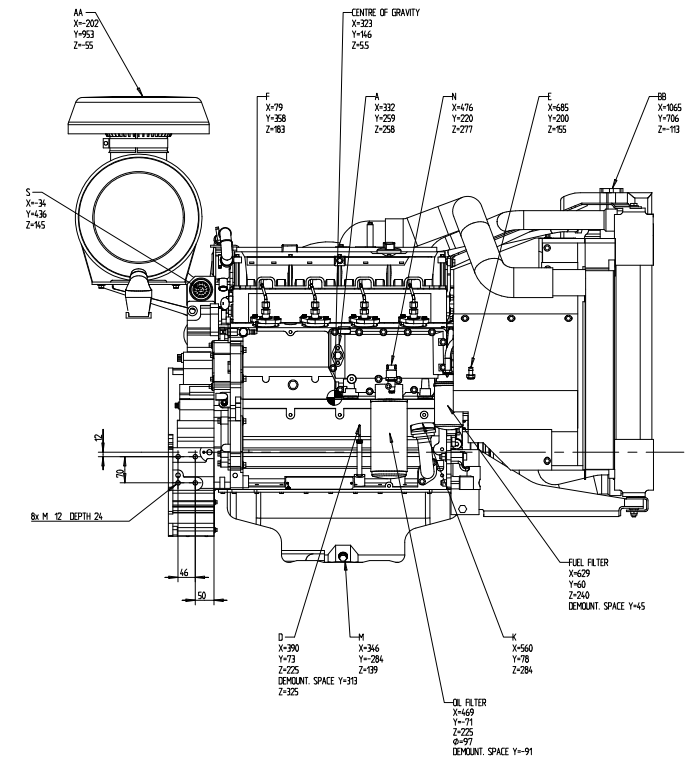
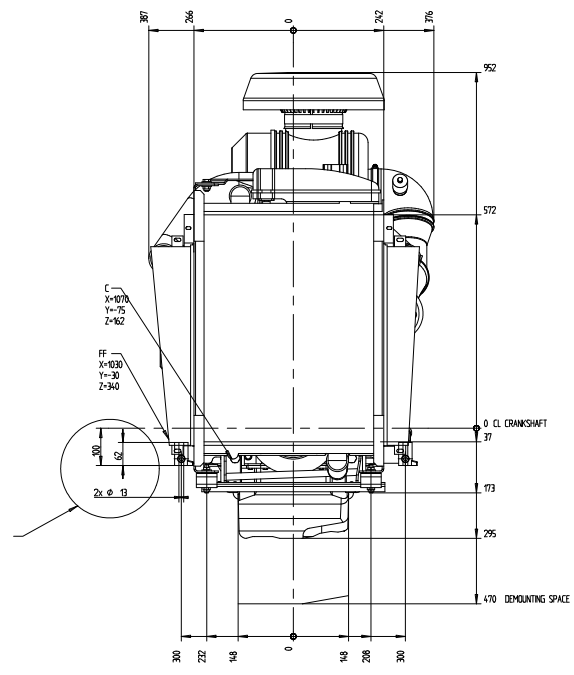


FRONT ENGINE MOUNTING



- A = ENGINE HEATER (OPTION)
- C = 2x COOLANT DRAIN M14x15
- D = OIL DIPSTICK
- E = FUEL INLET, FOR HOSE INTERNAL Ø12
- F = FUEL RETURN AND VENT SCREW, FOR HOSE INTERNAL Ø10
- G = EXHAUST OUTLET, TURBO INNER Ø54
- J = AIR VENTING FOR COOLANT FILLING, THERMOSTAT HOUSING
- K = 2x OIL FILLER CAP
- L = COOLANT TEMP SENDER M14x15
- M = 2x OIL DRAIN PLUG M16x15
- N = OIL PRESSURE SENDER M14x15
- S = CONNECTION ECU
- AA = AIR FILTER TOP
- BB = WATER FILLING + PRESSURE CAP
- CC = COOLANT LEVEL SWITCH
- FF = CHARGE AIR COOLER DRAIN M8x1
- GE = TO ENGINE HEATER (EXTERNAL) M26x15
- HH = FROM ENGINE HEATER (EXTERNAL) M26x15

SCALE 1:5

<p>VOLVO PENTA</p>		<p>ENGINE DIMENSIONS TAUSRGE/53KE EDC4</p>
<p>DISPOSITION DRAWING</p>		<p>3523962</p>