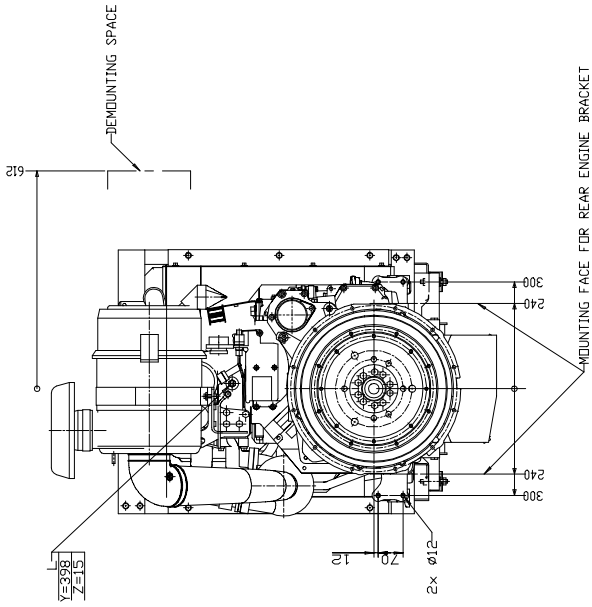
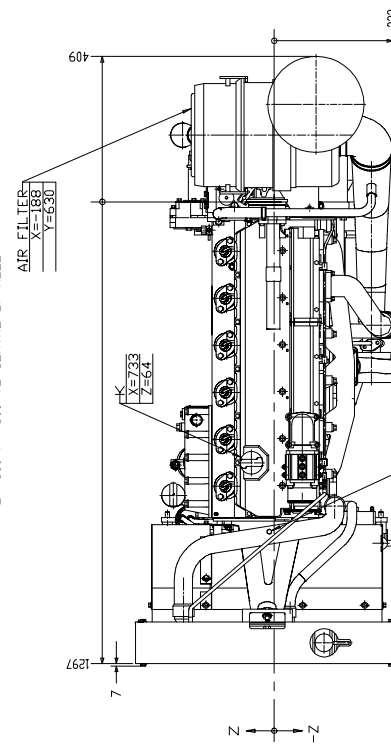
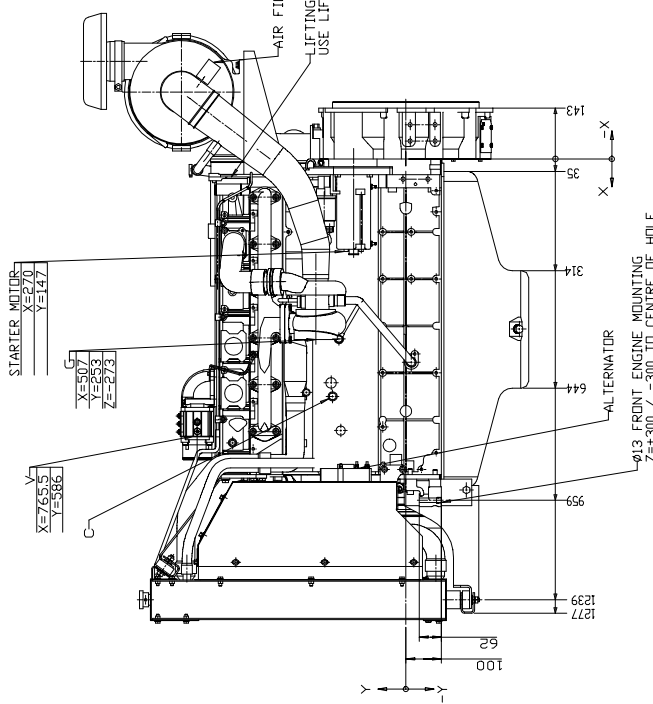
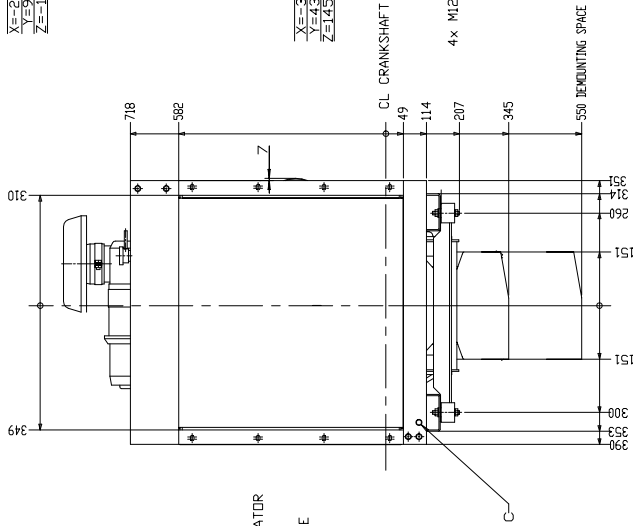
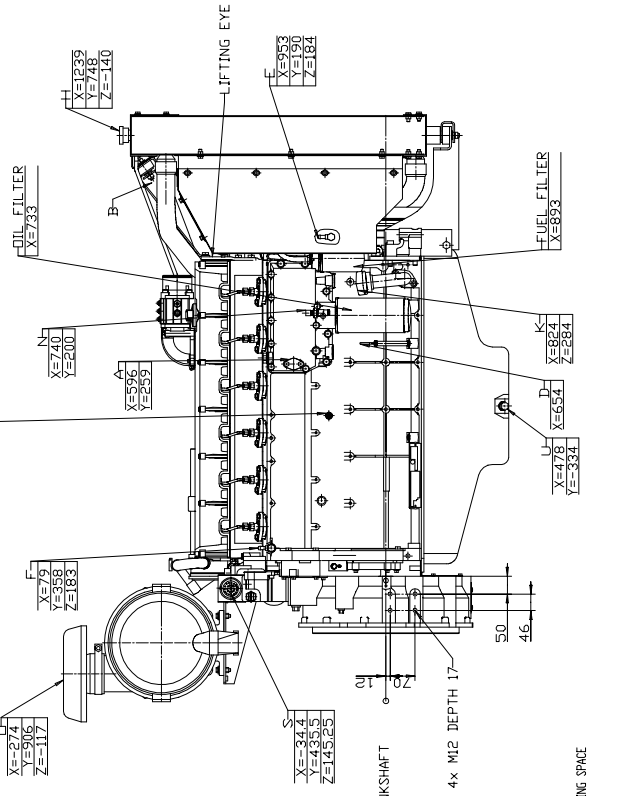


CENTRE OF GRAVITY
 X=451
 Y=160
 Z=0



- DRY WEIGHT APPROX. 670 KG
- A = ENGINE HEATER (OPTION)
 - B = COOLANT LEVEL SWITCH (OPTION)
 - C = 2x COOLANT DRAIN
 - D = OIL DIPSTICK
 - E = FUEL INLET, FOR HOSE INTERNAL $\phi=12mm$
 - F = FUEL RETURN & VENT SCREW, FOR HOSE INTERNAL $\phi=10mm$
 - G = EXHAUST OUTLET, TURBO INNER $\phi66$, FLANGE INNER $\phi70$
 - H = WATER FILLING + PRESSURE CAP
 - J = AIR VENTING FOR COOLANT FILLING, THERMOSTAT HOUSING
 - K = 2x OIL FILLER CAP
 - L = COOLANT TEMP SENDER
 - N = OIL PRESSURE SENDER
 - D = AIR FILTER TOP
 - S = CONNECTION ECU
 - U = 2x OIL DRAIN PLUG M18x1.5
 - V = CONNECTION POWER RELAYS HEATER FLANGE
- FLYWHEEL AND FLYWHEEL HOUSING SEE DWG 3590551