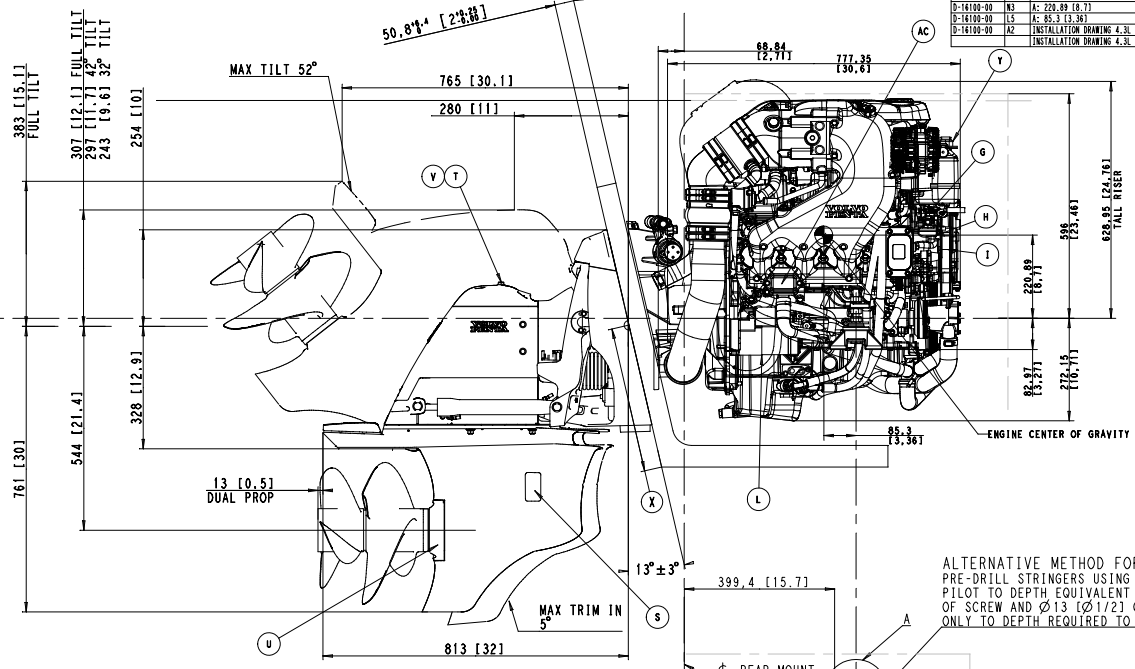
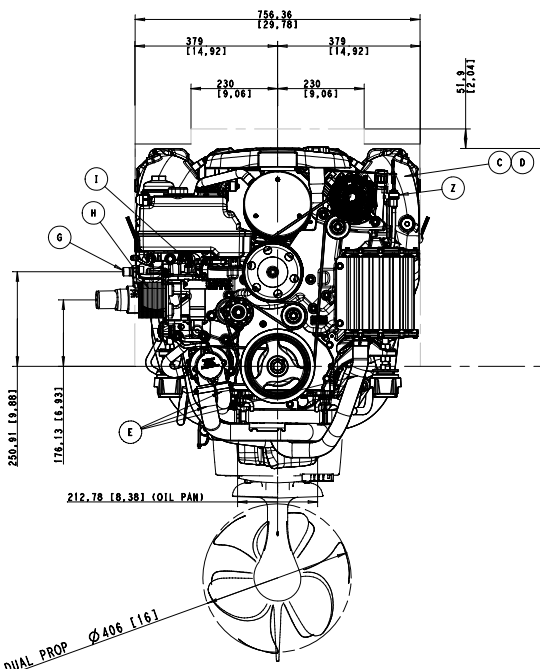


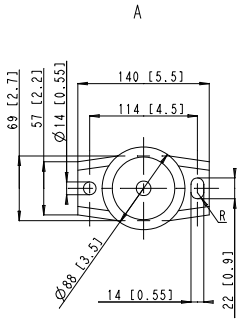
Order No.	Issue	Issue Date	Issue Description	Revision	Modification
D-16100-00	14	AC: 82.97	(3,27)	1-06-15	
D-16100-00	N6	AC: CENTER OF GRAVITY		1-06-15	
D-16100-00	N9	AC: 228.89	(9,7)	1-06-15	
D-16100-00	L5	AC: 85.3	(3,36)	1-06-15	
D-16100-00	A2	INSTALLATION DRAWING 4.3L GENV V6 w		1-06-15	
		INSTALLATION DRAWING 4.3L			



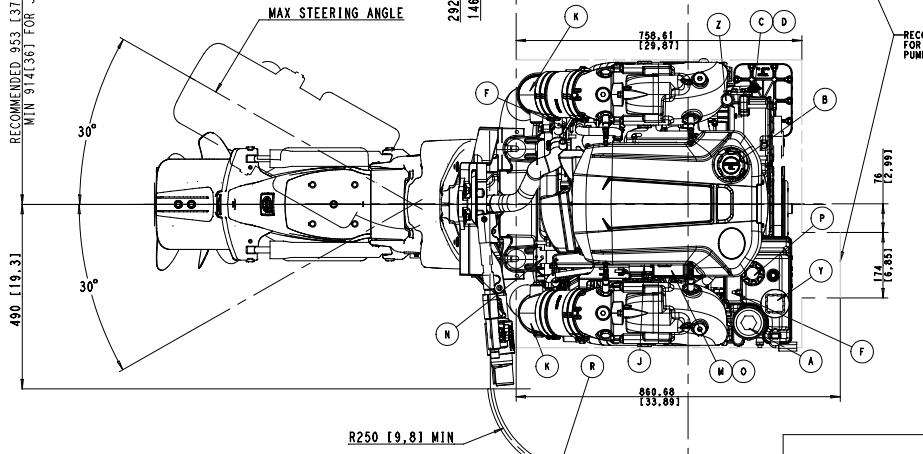
ALTERNATIVE METHOD FOR ENGINE MOUNT:  
 PRE-DRILL STRINGERS USING Ø9 (Ø11/32) FOR  
 PILOT TO DEPTH EQUIVALENT TO PENETRATION  
 OF SCREW AND Ø13 (Ø1/2) C-BORE IF NECESSARY.  
 ONLY TO DEPTH REQUIRED TO CLEAR SCREW SHANK.

STRINGERS MAY HAVE TO BE RELIEVED FOR  
 EXHAUST PIPE CLEARANCE. 2 PLACES.

LETTER	NAME
A	OIL FILTER, ENGINE
B	OIL FILL, ENGINE
C	OIL DRAIN, ENGINE
D	OIL DIPSTICK, ENGINE
E	RAW WATER DRAIN
F	LIFTING DEVICE
G	FUEL CONNECTION, I.D. 9,5 (3/8) NPT OR 6,35 (1/4) NPT
H	FUEL FILTER
I	ELECTRICAL FUEL PUMP
J	THROTTLE CABLE SINGLE
K	WATER COOLED EXHAUST PIPE FOR HOSE I.D. 98,4 (3 7/8")
L	STARTER MOTOR
M	FUSE PANEL
N	ELECTRICAL CONNECTION ENGINE - INSTRUMENT PANEL
O	CIRCUIT BREAKER FOR TRIM PUMP
P	OIL FILL, POWER STEERING
R	STEERING CABLE
S	WATER INTAKE
T	OIL FILL, OUTBOARD UNIT
U	OIL DRAIN, OUTBOARD UNIT
V	OIL DIPSTICK, OUTBOARD UNIT
X	SEE INSTALLATION INSTRUCTIONS
Y	COOLANT FILL AND LEVEL CHECK
Z	ENGINE FLUSH
AC	ANODE, EXHAUST MANIFOLDS (BOTH SIDES)



RECOMMENDED 953 (37,5) MIN 883 (34,8)  
 MIN 914 (36) FOR JOYSTICK SYSTEMS



RECOMMENDED CLEARANCE  
 FOR RAW-WATER  
 PUMP MAINTENANCE

INSTALLATION DRAWING  
 4.3L GENV V6

**VOLVO PENTA**

22468232 02